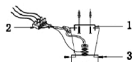


## ENGLISH IP20

### Specification of installation

In order to ensure safety use, please notice the following items:

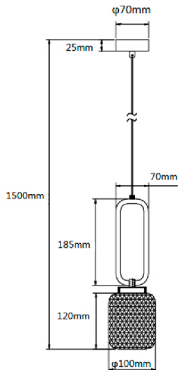
- Read and understand the whole Specification.
- Suitable for the use of 220-240V and 50-60Hz.
- Must be installed on the fixed places and be checked annually
- Please wear gloves as instalment and avoid rot on the surface of plaetng.
- **Please turn off** the lighting source by soft cloth as cleaning prohibited to use of rotted detergent.
- Please connect with the local sales service center when there are any abnormality.



1. Закрепить планку к стене
2. Подключение через клемму
3. Зафиксировать арматуру



3. Выкрутить плафон
4. Вставить лампу
5. Вкрутить обратно плафон



Product coding: CAROLINA SP1 V2